

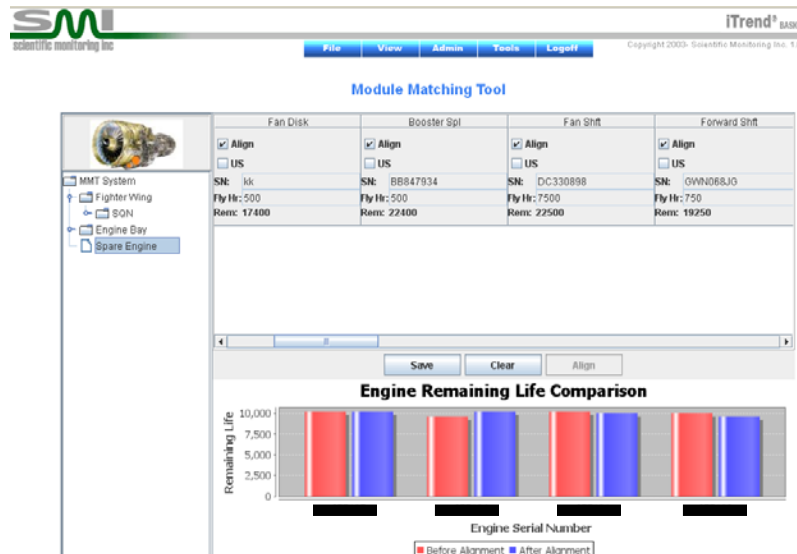
July 2011

Royal Australian Air Force (RAAF) Uses iTrend®

SMI's *iTrend*®basic monitors engine conditions on the RAAF "Wedgetail" airborne early warning and control (AEW&C) aircraft. Since June 2010, Boeing Defense, Space & Security personnel located at an RAAF base north of Sydney, Australia have used the *iTrend*® ground based engine monitoring service to improve aircraft availability.



This June SMI upgraded the *iTrend*® engine monitor to support the Wedgetail Engineering Structural Integrity Management Plan (ESIMP). The *iTrend*® upgrade, called the Module Matching Tool (MMT), increases time-on-wing for engine life limited parts, and thus reduces maintenance cost while improving aircraft availability. MMT enables effective fatigue life management through a reliability-centered work scope planning.



Module Matching Tool (MMT)



SMI Sales
 +1 480-752-7909 Ext. 209
sales@sci-mon.com
 Scottsdale, Arizona
 U. S. A.